



R-1W

AGRICULTURAL RADIAL TIRES

MAINLY USED FOR DRIVING WHEELS

- Special deepening tread pattern, special formula design makes the tire has better anti-puncture, wear-resistant performance, low skidding rate.
- Excellent traction and self-cleaning properties.
- Good weathering resistance.



TIRE SPECIFICATION	LOAD INDEX	SPEED GRADE	TIRE TYPE	SECTION WIDTH (MM)	OUTER DIAMETER (MM)	MAXIMUM SPEED (KM/H)	INFLATION PRESSURE (KPA)	MAXIMUM LOAD (KG)	DESIGN RIM WIDTH	PATTERN DEPTH (MM)
14.9R26	127	A8/B	TL	378	1316	40/50	160	1750	13.00	47.00
14.9R26	132	A8/B	TL	378	1316	40/50	210	2000	13.00	47.00
14.9R30	129	A8/B	TL	378	1400	40/50	160	1850	13.00	46.00
15.5R38	134	A8/B	TL	394	1569	40/50	160	2120	14.00	35.00
18.4R42	148	A8/B	TL	467	1850	40/50	160	3150	16.00	52.00
420/90R30	147	A8/B	TL	418	1518	40/50	240	3075	13.00	48.00
320/90R46	148	A8/B	TL	319	1744	40/50	360	3150	10.00	40.00
380/90R46	149	A8/B	TL	380	1852	40/50	240	3250	12.00	48.00
320/90R50	150	A8/B	TL	319	1846	40/50	360	3350	10.00	40.00
320/90R54	151	A8/B	TL	319	1948	40/50	360	3450	10.00	40.00
280/85R20	112	A8/B	TL	282	984	40/50	160	1120	9.00	40.00
280/85R24	115	A8/B	TL	282	1086	40/50	160	1215	9.00	43.00



R-1W

TIRE SPECIFICATION	LOAD INDEX	SPEED GRADE	TIRE TYPE	SECTION WIDTH (MM)	OUTER DIAMETER (MM)	MAXIMUM SPEED (KM/H)	INFLATION PRESSURE (KPA)	MAXIMUM LOAD (KG)	DESIGN RIM WIDTH	PATTERN DEPTH (MM)
320/85R24	122	A8/B	TL	319	1154	40/50	160	1500	10.00	44.00
340/85R24	125	A8/B	TL	343	1188	40/50	160	1650	11.00	45.00
380/85R24	131	A8/B	TL	380	1256	40/50	160	1950	12.00	46.00
420/85R24	137	A8/B	TL	418	1324	40/50	160	2300	13.00	48.00
320/85R28	124	A8/B	TL	319	1255	40/50	160	1600	10.00	44.00
380/85R28	133	A8/B	TL	380	1357	40/50	160	2060	12.00	46.00
420/85R28 (16.9R28)	139	A8/B	TL	418	1425	40/50	160	2430	13.00	48.00
420/85R28 (16.9R28)	144	A8/B	TL	418	1425	40/50	240	2800	13.00	48.00
340/85R28	127	A8/B	TL	343	1293	40/50	160	1750	11.00	45.00
380/85R30	135	A8/B	TL	380	1408	40/50	160	2180	12.00	47.00
420/85R30 (16.9R30)	140	A8/B	TL	418	1476	40/50	160	2500	13.00	48.00
460/85R30	145	A8/B	TL	455	1544	40/50	160	2900	16.00	52.00
380/85R34	137	A8/B	TL	380	1510	40/50	160	2300	12.00	47.00
380/85R34	142	A8/B	TL	380	1510	40/50	240	2650	12.00	47.00
420/85R34	142	A8/B	TL	418	1578	40/50	160	2650	13.00	48.00
420/85R34	147	A8/B	TL	418	1578	40/50	240	3075	13.00	48.00
460/85R34	147	A8/B	TL	455	1646	40/50	160	3075	14.00	52.00
420/85R38	144	A8/B	TL	418	1679	40/50	160	2800	13.00	48.00
460/85R38	149	A8/B	TL	455	1747	40/50	160	3250	16.00	52.00
460/85R38	151	A8/B	TL	455	1747	40/50	240	3450	16.00	52.00
520/85R38 (20.8R38)	155	A8/B	TL	516	1849	40/50	160	4125	18.00	54.00
520/85R38 (20.8R38)	163	A8/B	TL	516	1849	40/50	240	4875	18.00	54.00



R-1W

TIRE SPECIFICATION	LOAD INDEX	SPEED GRADE	TIRE TYPE	SECTION WIDTH (MM)	OUTER DIAMETER (MM)	MAXIMUM SPEED (KM/H)	INFLATION PRESSURE (KPA)	MAXIMUM LOAD (KG)	DESIGN RIM WIDTH	PATTERN DEPTH (MM)
520/85R38 (20.8R38)	169	A8/B	TL	516	1849	40/50	360	5800	18.00	54.00
650/85R38	173	A8/B	TL	645	2071	40/50	240	6500	20.00	61.00
520/85R42 (20.8R42)	157	A8/B	TL	516	1951	40/50	160	4125	16.00	54.00
520/85R42 (20.8R42)	162	A8/B	TL	516	1951	40/50	240	4750	16.00	54.00
480/80R38	149	A8/B	TL	479	1733	40/50	160	3250	15.00	50.00
480/80R38	151	A8/B	TL	479	1733	40/50	240	3450	15.00	50.00
480/80R42	151	A8/B	TL	479	1835	40/50	160	3450	16.00	52.00
480/80R46	152	A8/B	TL	479	1936	40/50	160	3550	16.00	52.00
480/80R46	158	A8/B	TL	479	1936	40/50	240	4250	16.00	52.00
480/80R50	159	A8/B	TL	479	2038	40/50	160	3750	16.00	52.00
620/75R26 (23.1R26)	166	A8/B	TL	625	1590	40/50	320	5300	20.00	55.00
380/70R20	132	D	TL	380	1082	65	240	2000	12.00	40.00
380/70R24	116	D	TL	319	1094	65	160	1250	10.00	39.00
360/70R20	120	D	TL	357	1042	65	160	1400	11.00	39.00
360/70R20	129	D	TL	357	1042	65	240	1850	11.00	39.00
360/70R24	122	D	TL	357	1152	65	160	1500	11.00	40.50
360/70R24	127	D	TL	357	1152	65	240	1750	11.00	40.50
360/70R24	133	D	TL	357	1152	65	320	2060	11.00	40.50
380/70R24	125	D	TL	380	1190	65	160	1650	12.00	42.00
380/70R24	130	D	TL	380	1190	65	240	1900	12.00	42.00
420/70R24	130	D	TL	418	1248	65	160	1900	13.00	45.00
420/70R24	136	D	TL	418	1248	65	240	2240	13.00	45.00





R-1W

TIRE SPECIFICATION	LOAD INDEX	SPEED GRADE	TIRE TYPE	SECTION WIDTH (MM)	OUTER DIAMETER (MM)	MAXIMUM SPEED (KM/H)	INFLATION PRESSURE (KPA)	MAXIMUM LOAD (KG)	DESIGN RIM WIDTH	PATTERN DEPTH (MM)
320/70R28	119	D	TL	319	1189	65	160	1360	10.00	41.00
320/70R28	125	D	TL	357	1251	65	160	1650	11.00	42.00
320/70R28	130	D	TL	357	1251	65	240	1900	11.00	42.00
380/70R28	127	D	TL	380	1293	65	160	1750	12.00	44.00
380/70R28	133	D	TL	380	1293	65	240	2060	12.00	44.00
420/70R28	133	D	TL	418	1349	65	160	2060	13.00	45.00
480/70R28	140	D	TL	479	1421	65	160	2500	15.00	47.00
480/70R30	141	D	TL	479	1478	65	160	2575	15.00	47.00
580/70R38	155	D	TL	577	1827	65	160	3875	18.00	53.00
620/70R38	170	D	TL	625	1833	65	320	6000	20.00	52.00
710/70R38	166	D	TL	716	1959	65	160	5300	23.00	58.00
710/70R38	171	D	TL	716	1959	65	240	6150	23.00	58.00
710/70R38	178	D	TL	716	1959	65	340	7500	23.00	58.00
620/70R42	160	D	TL	625	1935	65	160	4500	20.00	52.00
620/70R42	172	D	TL	625	1935	65	320	6300	20.00	52.00
440/65R24	135	D	TL	441	1182	65	240	2180	14.00	45.00
540/65R24	146	D	TL	550	1312	65	240	3000	18.00	50.00
440/65R28	138	D	TL	441	1283	65	240	2360	14.00	45.00
480/65R28	142	D	TL	479	1335	65	240	2650	15.00	49.00
540/65R28	142	D	TL	550	1413	65	160	2650	18.00	50.00
540/65R28	149	D	TL	550	1413	65	240	3250	18.00	50.00
600/65R28	147	D	TL	591	1491	65	160	3075	18.00	51.00



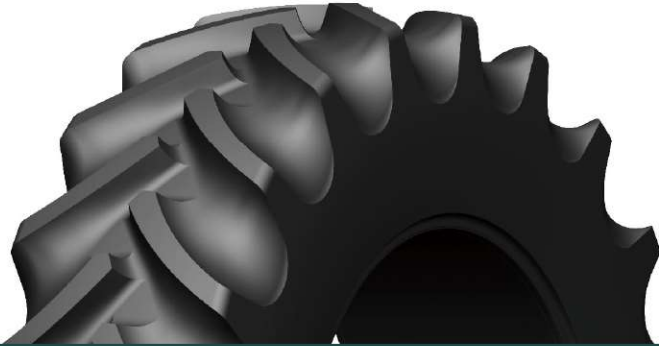
R-1W

TIRE SPECIFICATION	LOAD INDEX	SPEED GRADE	TIRE TYPE	SECTION WIDTH (MM)	OUTER DIAMETER (MM)	MAXIMUM SPEED (KM/H)	INFLATION PRESSURE (KPA)	MAXIMUM LOAD (KG)	DESIGN RIM WIDTH	PATTERN DEPTH (MM)
600/65R28	154	D	TL	591	1491	65	240	3750	18.00	51.00
540/65R30	143	D	TL	550	1464	65	160	2725	18.00	50.00
540/65R30	150	D	TL	550	1464	65	240	3350	18.00	50.00
800/65R32	167	D	TL	798	1853	65	160	5450	27.00	60.00
800/65R32	172	D	TL	798	1853	65	240	6300	27.00	60.00
800/65R32	178	D	TL	798	1853	65	320	7500	27.00	60.00
540/65R34	145	D	TL	550	1835	65	160	2900	18.00	50.00
540/65R34	152	D	TL	550	1566	65	240	3550	18.00	50.00
540/65R38	153	D	TL	550	1566	65	240	3650	18.00	50.00
600/65R38	153	D	TL	591	1745	65	160	3650	18.00	51.00
600/65R38	159	D	TL	591	1745	65	240	4375	18.00	51.00
650/65R38	157	D	TL	645	1811	65	160	4125	20.00	53.00
650/65R38	163	D	TL	645	1811	65	240	4875	20.00	53.00
600/65R42	154	D	TL	591	1847	65	160	3750	18.00	51.00
650/65R42	158	D	TL	645	1913	65	160	4250	20.00	53.00
650/65R42	165	D	TL	645	1913	65	240	5150	20.00	53.00
900/60R32	181	D	TL	896	1893	65	320	8250	28.00	61.00
IF520/85R42	169	A8	TL	526	1951	40	240	5800	18.00	54.00
IF600/70R30	159	D	TL	603	1602	65	160	4375	21.00	54.00
IF600/70R30CFO	173	A8	TL	603	1602	40	320	6500	21.00	54.00
IF710/70R42	179	D	TL	716	2061	65	240	7750	25.00	60.00
IF800/70R38	179	D	TL	794	2085	65	160	7750	27.00	60.00



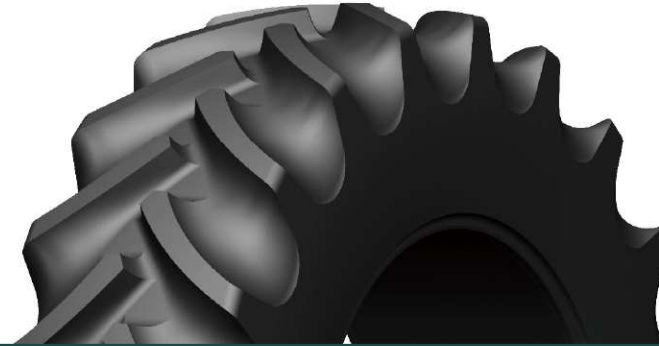


AR1200



TIRE SPECIFICATION	LOAD INDEX	SPEED GRADE	TIRE TYPE	SECTION WIDTH (MM)	OUTER DIAMETER (MM)	MAXIMUM SPEED (KM/H)	INFLATION PRESSURE (KPA)	MAXIMUM LOAD (KG)	DESIGN RIM WIDTH	PATTERN DEPTH (MM)
480/65R28	142	D	TL	479	1335	65	240	2650	15.00	49.00
540/65R30	143	D	TL	550	1464	65	160	2725	18.00	52.00
540/65R30	150	D	TL	378	1464	65	240	3350	18.00	52.00
600/65R28	147	D	TL	591	1491	65	160	3075	20.00	55.00
600/65R28	154	D	TL	591	1491	65	240	3750	20.00	55.00
650/65R38	157	D	TL	645	1811	65	160	4125	20.00	61.00
650/65R38	163	D	TL	645	1811	65	240	4875	20.00	61.00
650/65R42	158	D	TL	645	1913	65	160	4250	20.00	61.00
650/65R42	165	D	TL	645	1913	65	240	5150	20.00	61.00
420/85R24	137	D	TL	418	1324	65	160	2300	W15L	50.00
420/85R24	142	D	TL	418	1324	65	240	2650	W15L	50.00
420/85R28	139	D	TL	418	1425	65	160	2430	W15L	50.00
420/85R28	144	D	TL	418	1425	65	240	2800	W15L	50.00
520/85R38	155	D	TL	516	1849	65	160	3875	DW16L	54.00
520/85R38	163	D	TL	516	1849	65	240	4875	DW16L	54.00
520/85R38	169	D	TL	516	1849	65	360	5800	DW16L	54.00

AR2000



TIRE SPECIFICATION	LOAD INDEX	SPEED GRADE	TIRE TYPE	SECTION WIDTH (MM)	OUTER DIAMETER (MM)	MAXIMUM SPEED (KM/H)	INFLATION PRESSURE (KPA)	MAXIMUM LOAD (KG)	DESIGN RIM WIDTH	PATTERN DEPTH (MM)
IF520/85R42	169	A8	TL	526	1951	40	240	5800	18.00	54.00
IF580/80R34	177	A8	TL	586	1792	40	360	7300	20.00	55.00

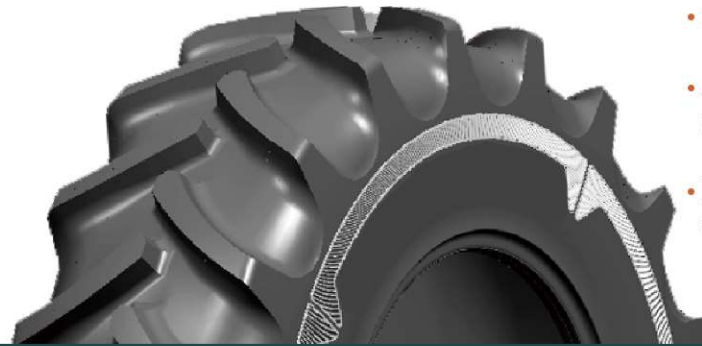




AR100

FOR DRIVE WHEEL RADIAL TIRES

- Faster traveling speed.
- Avoids compaction of the soil, which is favorable to the growth of crops.
- Reduces the skidding rate of the vehicle, which can effectively reduce fuel consumption.



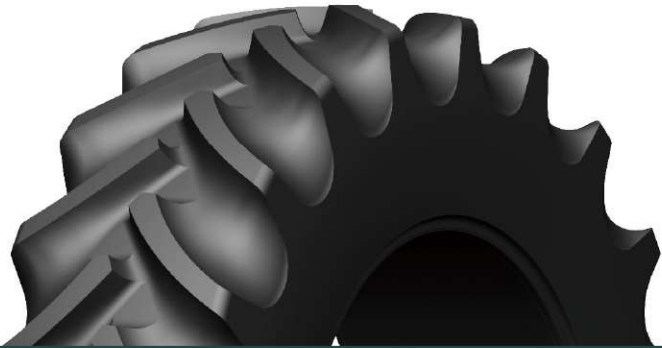
TIRE SPECIFICATION	LOAD INDEX	SPEED GRADE	TIRE TYPE	SECTION WIDTH (MM)	OUTER DIAMETER (MM)	MAXIMUM SPEED (KM/H)	INFLATION PRESSURE (KPA)	MAXIMUM LOAD (KG)	DESIGN RIM WIDTH	PATTERN DEPTH (MM)
9.5R24	107	A8/B	TL	240	1040	50	160	975	8.00	33.00
9.5R24	112	A8/B	TL	240	1040	50	210	1120	8.00	33.00
11.2R28	116	A8/B	TL	285	1200	50	160	1250	10.00	35.00
12.4R24	119	A8/B	TL	315	1145	50	160	1360	11.00	36.00
13.6R24	114	A8/B	TL	345	1210	50	120	1180	12.00	37.00
13.6R24	121	A8/B	TL	345	1210	50	160	1450	12.00	37.00
13.6R24	124	A8/B	TL	345	1210	50	210	1600	12.00	37.00
14.9R24	126	A8/B	TL	378	1245	50	160	1700	13.00	38.00
14.9R24	130	A8/B	TL	378	1245	50	210	1900	13.00	38.00
14.9R26	127	A8/B	TL	378	1316	50	160	1750	13.00	38.00
14.9R26	132	A8/B	TL	378	1316	50	210	2000	13.00	38.00
14.9R28	128	A8/B	TL	378	1350	50	160	1800	13.00	38.00
14.9R28	133	A8/B	TL	378	1350	50	210	2060	13.00	38.00
14.9R30	129	A8/B	TL	378	1418	50	160	1850	13.00	38.00
14.9R30	134	A8/B	TL	378	1418	50	210	2120	13.00	38.00

TIRE SPECIFICATION	LOAD INDEX	SPEED GRADE	TIRE TYPE	SECTION WIDTH (MM)	OUTER DIAMETER (MM)	MAXIMUM SPEED (KM/H)	INFLATION PRESSURE (KPA)	MAXIMUM LOAD (KG)	DESIGN RIM WIDTH	PATTERN DEPTH (MM)
15R24	144	A6	TL	406	1330	50	280	2800	14.00	31.00
15R24	148	A6	TL	410	1330	50	330	3150	14.00	31.00
16.9R34	132	A8/B	TL	429	1587	50	120	2000	15.00	39.00
16.9R34	139	A8/B	TL	429	1587	50	160	2430	15.00	39.00
16.9R34	143	A8/B	TL	429	1587	50	210	2725	15.00	39.00
18.4R30	142	A8/B	TL	467	1545	50	160	2650	16.00	42.00
18.4R34	144	A8/B	TL	467	1645	50	160	2800	16.00	42.00
18.4R34	149	A8/B	TL	467	1645	50	210	3250	16.00	42.00
18.4R38	146	A8/B	TL	467	1750	50	160	3000	16.00	42.00
18.4R38	151	A8/B	TL	467	1750	50	210	3450	16.00	42.00





AR110



TIRE SPECIFICATION	LOAD INDEX	SPEED GRADE	TIRE TYPE	SECTION WIDTH (MM)	OUTER DIAMETER (MM)	MAXIMUM SPEED (KM/H)	INFLATION PRESSURE (KPA)	MAXIMUM LOAD (KG)	DESIGN RIM WIDTH	PATTERN DEPTH (MM)
620/75R34	170	D	TL	625	1794	40	320	6000	20.00	48.00



AR110 AGRICULTURAL RADIAL TIRES



R-1 TIRE SERIES

R-1 TIRE SERIES

AB100





AB100

TIRE SPECIFICATION	LOAD INDEX	SPEED GRADE	TIRE TYPE	SECTION WIDTH (MM)	OUTER DIAMETER (MM)	MAXIMUM SPEED (KM/H)	INFLATION PRESSURE (KPA)	MAXIMUM LOAD (KG)	DESIGN RIM WIDTH	PATTERN DEPTH (MM)
13.6-24	6	A8	TT	345	1210	40	150	1215	W12	37.00
13.6-24	8	A8	TT	345	1210	40	190	1400	W12	37.00
13.6-24	10	A8	TT	345	1210	40	240	1615	W12	37.00
14.9-24	6	A8	TT	380	1265	40	140	1360	W13	38.00
14.9-24	8	A8	TT	380	1265	40	180	1600	W13	38.00
14.9-24	10	A8	TT	380	1265	40	220	1800	W13	38.00
14.9-24	12	A8	TT	380	1265	40	260	2000	W13	38.00
14.9-26	8	A8	TT	378	1315	40	180	1650	W13	36.00
14.9-26	10	A8	TT	378	1315	40	220	1850	W13	36.00
14.9-26	12	A8	TT	378	1315	40	275	2310	W13	36.00
12.4-28	6	A8	TT	315	1260	40	170	1020	W11	36.00
12.4-28	8	A8	TT	315	1260	40	230	1360	W11	36.00
12.4-28	10	A8	TT	315	1260	40	290	1570	W11	36.00
13.6-28	6	A8	TT	345	1310	40	150	1285	W12	37.00
13.6-28	8	A8	TT	345	1310	40	190	1500	W12	37.00
13.6-28	10	A8	TT	345	1310	40	250	1700	W12	37.00

AB100

TIRE SPECIFICATION	LOAD INDEX	SPEED GRADE	TIRE TYPE	SECTION WIDTH (MM)	OUTER DIAMETER (MM)	MAXIMUM SPEED (KM/H)	INFLATION PRESSURE (KPA)	MAXIMUM LOAD (KG)	DESIGN RIM WIDTH	PATTERN DEPTH (MM)
14.9-28	6	A8	TT	380	1365	40	140	1450	W13	38.00
14.9-28	8	A8	TT	380	1365	40	180	1700	W13	38.00
14.9-28	10	A8	TT	380	1365	40	220	1900	W13	38.00
14.9-28	12	A8	TT	380	1365	40	270	2100	W13	38.00
16.9-28	10	A8	TT	430	1435	40	170	1950	W15L	39.00
14.9-30	6	A8	TT	378	1415	40	140	1500	W13	38.00
14.9-30	8	A8	TT	378	1415	40	180	1750	W13	38.00
14.9-30	10	A8	TT	378	1415	40	220	1950	W13	38.00
16.9-30	8	A8	TT	430	1485	40	170	2000	W15L	40.00
16.9-30	10	A8	TT	430	1485	40	190	2240	W15L	40.00
16.9-30	12	A8	TT	430	1485	40	230	2500	W15L	40.00
18.4-30	8	A8	TT	465	1550	40	140	2180	W16L	40.00
18.4-30	10	A8	TT	465	1550	40	180	2500	W16L	40.00
18.4-30	12	A8	TT	465	1550	40	220	2900	W16L	40.00
18.4-30	14	A8	TT	465	1550	40	250	3080	W16L	40.00
30.5L-32	16	A8	TT	775	1820	40	180	5000	DW27A	45.00
30.5L-32	16	A8	TT	775	1820	40	180	5000	DW27A	45.00
30.5L-32	18	A8	TT	775	1820	40	190	5355	DW27A	45.00



AB100

TIRE SPECIFICATION	LOAD INDEX	SPEED GRADE	TIRE TYPE	SECTION WIDTH (MM)	OUTER DIAMETER (MM)	MAXIMUM SPEED (KM/H)	INFLATION PRESSURE (KPA)	MAXIMUM LOAD (KG)	DESIGN RIM WIDTH	PATTERN DEPTH (MM)
16.9-34	8	A8	TT	430	1585	40	170	2120	W15L	40.00
16.9-34	10	A8	TT	430	1585	40	190	2360	W15L	40.00
18.4-34	8	A8	TT	465	1655	40	140	2300	W16L	40.00
18.4-34	10	A8	TT	465	1655	40	180	2725	W16L	40.00
18.4-34	12	A8	TT	465	1655	40	220	3000	W16L	40.00
12-38	8	A8	TT	330	1575	40	220	1600	W11	38.00
12-38	12	A8	TT	330	1575	40	260	1760	W11	38.00
12-38	14	A8	TT	330	1575	40	390	2180	W11	38.00
13.6-38	8	A8	TT	345	1565	40	200	1950	W12	37.00
13.6-38	10	A8	TT	345	1565	40	250	2120	W12	37.00
16.9-38	8	A8	TT	430	1685	40	180	2240	W15L	39.00
16.9-38	10	A8	TT	430	1685	40	200	2450	W15L	39.00
18.4-38	8	A8	TT	467	1755	40	140	2430	W16L	40.00
18.4-38	10	A8	TT	467	1755	40	180	2900	W16L	40.00
18.4-38	12	A8	TT	467	1755	40	220	3250	W16L	40.00
18.4-38	14	A8	TT	467	1755	40	250	3450	W16L	40.00
18.4-38	16	A8	TT	467	1755	40	280	3650	W16L	40.00

AB100

TIRE SPECIFICATION	LOAD INDEX	SPEED GRADE	TIRE TYPE	SECTION WIDTH (MM)	OUTER DIAMETER (MM)	MAXIMUM SPEED (KM/H)	INFLATION PRESSURE (KPA)	MAXIMUM LOAD (KG)	DESIGN RIM WIDTH	PATTERN DEPTH (MM)
18.4-42	10	A8	TT	467	1857	40	180	3000	W16L	37.00
18.4-42	12	A8	TT	467	1857	40	220	3350	W16L	37.00
18.4-42	14	A8	TT	467	1857	40	250	3650	W16L	37.00
8.3-24	6	A8	TT	210	995	40	240	720	W7	30.00
8.3-24	8	A8	TT	210	995	40	320	850	W7	30.00
11.2-28	6	A8	TT	250	1205	40	180	1000	W10	35.00
20.8-38	8	A8	TT	528	1835	40	120	2800	W18L	42.00
20.8-38	10	A8	TT	528	1835	40	150	3150	W18L	42.00
20.8-38	12	A8	TT	528	1835	40	190	3550	W18L	42.00
20.8-38	14	A8	TT	528	1835	40	220	3875	W18L	42.00
20.8-38	18	A8	TT	528	1835	40	380	5300	W18L	42.00
5.00-12	6	A8	TT	145	590	40	270	280	4.00E	24.00
6.00-12	6	A8	TT	165	640	40	250	325	4.50E	24.00
6.00-16	6	A8	TT	165	745	40	250	395	4.50E	28.00
7.50-16	8	A8	TT	205	810	40	280	615	5.50F	26.00
8.3-20	6	A8	TT	210	895	40	240	555	W7	32.00
8.3-20	8	A8	TT	210	895	40	310	680	W7	32.00



R-1S

PUNCTURE RESISTANT TIRES



R-1S

PUNCTURE RESISTANT TIRES

MAINLY SUITABLE FOR CORN, COTTON, SUGAR CANE AND OTHER HARD STUBBLE SOIL CULTIVATION

- The tread grooves are fully inverted rounded and the special formula is designed to give the tire better puncture and abrasion resistance.
- Good traction and self-cleaning properties.
- Good weather aging resistance.

TIRE SPECIFICATION	LOAD INDEX	SPEED GRADE	TIRE TYPE	SECTION WIDTH (MM)	OUTER DIAMETER (MM)	MAXIMUM SPEED (KM/H)	INFLATION PRESSURE (KPA)	MAXIMUM LOAD (KG)	DESIGN RIM WIDTH	PATTERN DEPTH (MM)
8.3-20	8	A6	TT	210	895	30	310	850	7.00	28.00
9.5-20	6	A6	TT	240	950	30	210	810	8.00	31.50
9.5-20	8	A6	TT	240	950	30	280	955	8.00	31.50
8.3-24	6	A6	TT	211	993	30	240	810	7.00	28.00
8.3-24	8	A6	TT	211	993	30	320	960	7.00	28.00
9.5-24	6	A6/*A8	TT	240	1050	30/*40	210/*210	940/*850	8.00	33.00
9.5-24	8	A6	TT	240	1050	30	280	1100	8.00	33.00



R-1S

TIRE SPECIFICATION	LOAD INDEX	SPEED GRADE	TIRE TYPE	SECTION WIDTH (MM)	OUTER DIAMETER (MM)	MAXIMUM SPEED (KM/H)	INFLATION PRESSURE (KPA)	MAXIMUM LOAD (KG)	DESIGN RIM WIDTH	PATTERN DEPTH (MM)
11.2-24	6	A6/*A8	TT	285	1105	30/*40	180/*180	1045/*950	10.00	35.50
11.2-24	8	A6	TT	285	1105	30	240	1225	10.00	35.50
11.2-24	10	A6	TT	285	1105	30	300	1380	10.00	35.50
12.4-24	6	A6/*A8	TT	315	1160	30/*40	170/*170	1200/*1090	11.00	37.00
12.4-24	8	A6/*A8	TT	315	1160	30/*40	230/*220	1415/*1285	11.00	37.00
12.4-24	10	A6/*A8	TT	315	1160	30/*40	280/*280	1600/*1450	11.00	37.00
12.4-24	12	A8	TT	315	1160	40	330	1600	11.00	37.00
13.6-24	6	A6/*A8	TT	345	1210	30/*40	160/*150	1340/*1215	12.00	37.00
13.6-24	8	A6/*A8	TT	345	1210	30/*40	210/*190	1545/*1400	12.00	37.00
14.9-24	6	A6/*A8	TT	380	1265	30/*40	140/*140	1510/*1360	13.00	38.00
14.9-24	8	A6/*A8	TT	380	1265	30/*40	180/*180	1760/*1600	13.00	38.00
14.9-24	8	A6/*A8	TT	380	1265	30/*40	230/*220	1990/*1800	13.00	38.00
15-24	10	A6	TT	410	1330	30	280	2800	14.00	39.00
16.9-24	8	A6/*A8	TT	430	1335	30/*40	170/*170	2040/*1850	15.00	39.00
16.9-24	12	A6	TT	430	1335	30	250	2550	15.00	39.00

R-1S

TIRE SPECIFICATION	LOAD INDEX	SPEED GRADE	TIRE TYPE	SECTION WIDTH (MM)	OUTER DIAMETER (MM)	MAXIMUM SPEED (KM/H)	INFLATION PRESSURE (KPA)	MAXIMUM LOAD (KG)	DESIGN RIM WIDTH	PATTERN DEPTH (MM)
9.5-28	8	A6	TT	240	1150	30	280	1215	10.00	33.00
14.9-26	6	A6/*A8	TT	378	1316	30/*40	140/*140	1560/*1400	13.00	38.00
14.9-26	8	A6/*A8	TT	378	1316	30/*40	180/*180	1820/*1650	13.00	38.00
14.9-26	10	A6/*A8	TT	378	1316	30/*40	230/*220	2055/*1850	13.00	38.00
18.4-26	10	A6/*A8	TT	465	1450	30/*40	180/*180	2645/*2360	16.00	41.50
18.4-26	12	A6/*A8	TT	465	1450	30/*40	230/*220	2985/*2650	16.00	41.50
23.1-26	10	A6/*A8	TT	590	1605	30/*40	140/*140	3245/*2900	20.00	42.60
23.1-26	12	A6/*A8	TT	590	1605	30/*40	170/*170	3610/*3250	20.00	42.60
23.1-26	18	A6/*A8	TT	590	1605	40	250	4125	20.00	42.60
11.2-28	6	A6/*A8	TT	285	1205	30/*40	180/*180	1115/*1000	10.00	35.00
11.2-28	8	A6	TT	285	1205	30	240	1305	10.00	35.00
12.4-28	8	A6	TT	315	1260	30	230	1510	11.00	36.00
12.4-28	10	A6/*A8	TT	315	1260	30/*40	220	1320	11.00	36.00
13.6-28	8	A6/*A8	TT	345	1310	30/*40	210/*190	1645/*1500	12.00	37.00
13.6-28	10	A6/*A8	TT	345	1310	30/*40	250/*250	1910/*1700	12.00	37.00



R-1S

TIRE SPECIFICATION	LOAD INDEX	SPEED GRADE	TIRE TYPE	SECTION WIDTH (MM)	OUTER DIAMETER (MM)	MAXIMUM SPEED (KM/H)	INFLATION PRESSURE (KPA)	MAXIMUM LOAD (KG)	DESIGN RIM WIDTH	PATTERN DEPTH (MM)
14.9-28	8	A6/*A8	TT	380	1365	30/*40	180/*180	1880/*1700	13.00	38.00
14.9-28	10	A6/*A8	TT	378	1367	30/*40	230/*220	2120/*1900	13.00	38.00
14.9-28	12	A6/*A8	TT	378	1367	30/*40	270/*270	2310/*2100	13.00	38.00
16.9-28	8	A6/*A8	TT	430	1435	30/*40	170/*170	2175/*1950	15.00	39.00
16.9-28	10	A6/*A8	TT	430	1435	30/*40	200/*190	2380/*2120	15.00	39.00
18.4-28	8	A6/*A8	TT	467	1500	30/*40	140/*140	2310/*2120	16.00	41.00
18.4-28	10	A6/*A8	TT	467	1500	30/*40	180/*180	2715/*2430	16.00	41.00
14.9-30	10	A6/*A8	TT	378	1415	30/*40	230/*220	2190/*1950	13.00	38.00
16.9-30	8	A6/*A8	TT	430	1485	30/*40	170/*170	2245/*2000	15.00	39.00
16.9-30	10	A6/*A8	TT	430	1485	30/*40	200/*190	2455/*2240	15.00	39.00
16.9-30	12	A6/*A8	TT	430	1485	30/*40	240/*230	2730/*2500	15.00	39.00
16.9-30	14	A8	TT	430	1485	40	280	2725	15.00	39.00

R-1S

TIRE SPECIFICATION	LOAD INDEX	SPEED GRADE	TIRE TYPE	SECTION WIDTH (MM)	OUTER DIAMETER (MM)	MAXIMUM SPEED (KM/H)	INFLATION PRESSURE (KPA)	MAXIMUM LOAD (KG)	DESIGN RIM WIDTH	PATTERN DEPTH (MM)
18.4-30	8	A6/*A8	TL	465	1550	30/*40	140/*140	2415/*2180	16.00	41.50
18.4-30	10	A6/*A8	TT	465	1550	30/*40	180/*180	2815/*2500	16.00	41.50
18.4-30	12	A6/*A8	TT	465	1550	30/*40	230/*220	3180/*2900	16.00	41.50
18.4-30	14	A6	TT	465	1550	30	290	3705	16.00	41.50
23.1-30	12	A6/*A8	TT	587	1705	30/*40	170/*170	3850/3450	20.00	42.60
9.5-32	8	A6	TT	241	1251	30	280	1260	8.00	33.00
11-32	10	A6	TT	305	1360	30	240	1370	8.00	35.00
11-32	12	A6	TT	305	1360	30	290	1530	8.00	35.00
24.5-32	10	A6/*A8	TT	625	1805	30/*40	140/*140	3950/*3550	21.00	43.00
24.5-32	16	A6	TT	625	1805	40	210	4500	21.00	43.00



R-1S

TIRE SPECIFICATION	LOAD INDEX	SPEED GRADE	TIRE TYPE	SECTION WIDTH (MM)	OUTER DIAMETER (MM)	MAXIMUM SPEED (KM/H)	INFLATION PRESSURE (KPA)	MAXIMUM LOAD (KG)	DESIGN RIM WIDTH	PATTERN DEPTH (MM)
14.9-28	10	A6/*A8	TT	430	1585	30/*40	200/*190	2605/*2360	15.00	39.00
18.4-34	8	A6/*A8	TT	465	1655	30/*40	140/*140	2565/*2300	16.00	41.50
18.4-34	10	A6/*A8	TT	465	1655	30/*40	180/*180	2990/*2725	16.00	41.50
12.4-36	12	A6/*A8	TL	315	1464	30/*40	330	1950	11.00	36.00
11.2-38	12	A6	TT	284	1459	30	340	1885	10.00	35.00
13.6-38	8	A6	TT	345	1565	30	210	1910	12.00	37.00
15.5-38	8	A6/*A8	TT	395	1570	40/*30	180	1850/*2060	14.00	37.00
16.9-38	10	A6	TT	430	1685	30	200	2760	15.00	39.00
18.4-38	8	A8/*A6	TT	467	1755	40/*30	140	2430/*2715	16.00	41.00
18.4-38	10	A8/*A6	TT	467	1755	40/*30	180	2900/*3165	16.00	41.00
20.8-38	10	A8/*A6	TT	528	1835	40/*30	150/*160	3150/*3475	18.00	42.00
20.8-38	12	A8/*A6	TT	528	1835	40/*30	190/*200	3550/*4000	18.00	42.00
20.8-38	18	A6	TT	528	1835	30	380	5875	18.00	42.00

R-1S

TIRE SPECIFICATION	LOAD INDEX	SPEED GRADE	TIRE TYPE	SECTION WIDTH (MM)	OUTER DIAMETER (MM)	MAXIMUM SPEED (KM/H)	INFLATION PRESSURE (KPA)	MAXIMUM LOAD (KG)	DESIGN RIM WIDTH	PATTERN DEPTH (MM)
18.4-42	10	A8/*A6	TT	467	1857	40/*30	180	3000/*3330	16.00	40.9
20.8-42	10	A8	TT	528	1935	40	150	3350	18.00	42.00
20.8-42	12	A8/*A6	TT	528	1935	40/*30	190	3750/*3750	18.00	42.00
20.8-42	14	A8	TT	528	1935	40	220	4125	18.00	42.00
18.4-46	10	A8	TL	467	1958	40	180	3150	16.00	40.90
9.5-48	16	A8	TT	240	1655	40	400	1535	8.00	33.00
12.4-48	12	A6	TT	315	1760	30	320	2975	11.00	36.00
14.9-48	12	A6	TT	378	1875	30	270	3700	13.00	38.00
12.4-54	12	A6	TL	315	1921	30	310	3205	11.00	36.00



PR-1 SERIES WATERFIELD TIRE PRODUCTS

WATERFIELD TIRE PRODUCT LINEUP



AT100

SPECIALIZED FOR PADDY FIELDS

SUITABLE FOR PADDY FIELDS WITH DEEP MUD FOOTING AND HIGH SOIL VISCOSITY

- Patterned grooves wide, patterned blocks narrow, patterned grooves deep.
- High traction, good self-cleaning, low slip rate.

TIRE SPECIFICATION	LOAD INDEX	SPEED GRADE	TIRE TYPE	SECTION WIDTH (MM)	OUTER DIAMETER (MM)	MAXIMUM SPEED (KM/H)	INFLATION PRESSURE (KPA)	MAXIMUM LOAD (KG)	DESIGN RIM WIDTH	PATTERN DEPTH (MM)
7.5-16	6	A2	TT	195	890	10	300	750	5.50F	75.00
8.3-20	6	A2	TT	210	950	10	270	970	W7	65.00
8.3-20	8	A2	TT	210	950	10	350	1130	W7	65.00
8.3-24	6	A2	TT	210	1050	10	270	1135	W7	65.00



AT100

TIRE SPECIFICATION	LOAD INDEX	SPEED GRADE	TIRE TYPE	SECTION WIDTH (MM)	OUTER DIAMETER (MM)	MAXIMUM SPEED (KM/H)	INFLATION PRESSURE (KPA)	MAXIMUM LOAD (KG)	DESIGN RIM WIDTH	PATTERN DEPTH (MM)
9.5-24	6	A2	TT	240	1150	10	240	1315	W8	75.00
9.5-24	8	A2	TT	240	1150	10	290	1475	W8	75.00
11.2-24	6	A2	TT	285	1205	10	210	1465	W10	80.00
11.2-24	8	A2	TT	285	1205	10	270	1700	W10	80.00
12.4-26	6	A2	TT	315	1265	10	260	1730	W11	85.00
12.4-26	6	A2	TT	315	1265	10	260	2010	W11	85.00
14.9-26	10	A2	TT	378	1460	10	230	2040	W13	90.00
12.4/11-28	6	A2	TT	305	1315	10	160	1000	W10	85.00
12.4/11-28	8	A2	TT	305	1315	10	220	1200	W10	85.00
14.9-28	8	A2	TT	378	1510	10	180	1880	W13	90.00
14.9-28	10	A2	TT	378	1510	10	230	2120	W13	90.00
16.9-28	8	A2	TT	430	1535	10	170	2175	W15L	90.00
16.9-28	10	A2	TT	430	1535	10	200	2380	W15L	90.00
14.9-30	8	A2	TT	378	1560	10	180	1940	W13	92.00
14.9-30	10	A2	TT	378	1560	10	230	2190	W13	92.00

AT100

TIRE SPECIFICATION	LOAD INDEX	SPEED GRADE	TIRE TYPE	SECTION WIDTH (MM)	OUTER DIAMETER (MM)	MAXIMUM SPEED (KM/H)	INFLATION PRESSURE (KPA)	MAXIMUM LOAD (KG)	DESIGN RIM WIDTH	PATTERN DEPTH (MM)
16.9-30	6	A2	TT	430	1585	10	170	2250	W15L	90.00
16.9-30	8	A2	TT	430	1585	10	200	2455	W15L	90.00
18.4-30	10	A2	TT	467	1655	10	180	2815	W16L	89.00
18.4-30	12	A2	TT	467	1655	10	230	3180	W16L	89.00
11-32	6	A2	TT	305	1490	10	160	1080	W10	81.00
11-32	8	A2	TT	305	1490	10	230	1330	W10	81.00
16.9-34	10	A2	TT	430	1685	10	220	3385	W15L	88.00
18.4-34	10	A2	TT	467	1755	10	180	2990	W16L	89.00
13.6-38	8	A2	TT	345	1710	10	230	2675	W12	92.00
13.6-38	10	A2	TT	345	1710	10	250	2780	W12	92.00
18.4-38	10	A2	TT	467	1855	10	180	3165	W16L	89.00
18.4-38	12	A2	TT	467	1855	10	230	3575	W16L	89.00
20.8-38	10	A2	TT	528	1925	10	160	3475	W18L	90.00
20.8-38	12	A2	TT	528	1925	10	200	4000	W18L	90.00



R-2



SUITABLE FOR PADDY FIELDS WITH SHALLOW FOOTING DEPTHS AND LOW SOIL VISCOSITY.

- Patterned grooves wide, patterned blocks narrow, patterned grooves deep.
- High traction, good self-cleaning, low slip rate.

TIRE SPECIFICATION	LOAD INDEX	SPEED GRADE	TIRE TYPE	SECTION WIDTH (MM)	OUTER DIAMETER (MM)	MAXIMUM SPEED (KM/H)	INFLATION PRESSURE (KPA)	MAXIMUM LOAD (KG)	DESIGN RIM WIDTH	PATTERN DEPTH (MM)
9.5-24	6	A6/*A8	TT	241	1074	30/*40	210/*210	940/*850	8.00	60.00
14.9-24	6	A6/*A8	TT	378	1305	30/*40	140/*140	1510/*1360	13.00	65.00
14.9-24	8	A6/*A8	TT	378	1305	30/*40	180/*180	1760/*1600	13.00	65.00
13.6-24	8	A6/*A8	TT	345	1246	30/*40	210*190	1545/*1400	12.00	70.00
14.9-26	8	A6/*A8	TT	378	1355	30/*40	180/*180	1820/*1650	13.00	73.00
14.9-26	10	A6/*A8	TT	378	1355	30/*40	230/*220	2055/*1850	13.00	73.00
28L-26	14	A8	TT	714	1673	40	170	3750	25.00	89.00
14.9-28	8	A6/*A8	TT	378	1406	30/*40	180/*180	1880/*1700	13.00	73.00
14.9-28	10	A6/*A8	TT	378	1406	30/*40	230/*220	2120/*1900	13.00	73.00
18.4-30	12	A6/*A8	TT	467	1599	30/*40	230/*220	3180/*2900	16.00	81.00
23.1-30	10	A6/*A8	TT	587	1764	30/*40	140/*140	3460/*3075	20.00	89.00
900/60-32	12	A6/*A8	TT	886	1957	30/*40	240	7600/*7100	30.00	95.00
18.4-34	6	A6/*A8	TT	467	1700	30/*40	110/*110	2250/*2000	16.00	80.00
18.4-34	8	A6/*A8	TT	467	1355	30/*40	140/*140	2565/*2300	16.00	80.00
18.4-34	10	A6/*A8	TT	467	1700	30/*40	180/*180	2990/*2725	16.00	80.00
18.4-38	10	A6/*A8	TT	467	1802	30/*40	180/*180	3165/*2900	16.00	81.00

R-2 TIRE PRODUCTS



R-3



SUITABLE FOR SOFT, SANDY SOILS

- Shallow pattern depth.
- Good driving performance.

TIRE SPECIFICATION	LOAD INDEX	SPEED GRADE	TIRE TYPE	SECTION WIDTH (MM)	OUTER DIAMETER (MM)	MAXIMUM SPEED (KM/H)	INFLATION PRESSURE (KPA)	MAXIMUM LOAD (KG)	DESIGN RIM WIDTH	PATTERN DEPTH (MM)
14.9-24	6	A8	TL	378	1241	40	140	1360	13.00	20.00
14.9-24	8	A8	TL	378	1241	40	180	1600	13.00	11.00
14.9-24	10	A8	TL	378	1241	40	220	1800	13.00	20.00
14.9-24	12	A8	TL	378	1241	40	260	2000	13.00	20.00
16.9-28	6	A8	TL	429	1410	40	120	1650	15.00	21.00
16.9-28	8	A8	TL	429	1410	40	170	1950	15.00	21.00
16.9-28	10	A8	TL	429	1410	40	190	2120	15.00	21.00
16.9-28	12	A8	TL	429	1410	40	220	2430	15.00	21.00
16.9-30	6	A8	TL	429	1461	40	120	1700	15.00	21.00
16.9-30	8	A8	TL	429	1461	40	170	2000	15.00	21.00
16.9-30	10	A8	TL	429	1461	40	190	2240	15.00	21.00
16.9-30	12	A8	TL	429	1461	40	230	2500	15.00	21.00

R-3 TIRE PRODUCTS



AGRICULTURAL MACHINERY TIRE SERIES

I-1



I-3C



F-2



F-3



AR833



I-3/I-3B





I-1



GUIDE AND SUPPORT WHEELS FOR AGRICULTURAL EQUIPMENT

- Multi-stripe pattern design.
- Good guiding properties.

TIRE SPECIFICATION	LOAD INDEX	SPEED GRADE	TIRE TYPE	SECTION WIDTH (MM)	OUTER DIAMETER (MM)	MAXIMUM SPEED (KM/H)	INFLATION PRESSURE (KPA)	MAXIMUM LOAD (KG)	DESIGN RIM WIDTH	PATTERN DEPTH (MM)
8.5L-14	6	B	TT	216	721	50	250	850	6.00	6.00
9.5L-14	8	B	TT	241	741	50	300	1090	7.00	6.50
11L-14	6	B	TT	279	752	50	190	925	8.00	6.50
5.70-15	6	B	TT	150	652	50	330	675	4.50	6.50
5.90-15	4	B	TT	380	155	50	250	515	4.50	6.00
6.70-15	6	B	TT	380	170	50	300	730	4.50	6.00
7.60-15	8	B	TT	380	193	50	360	950	5.50	6.00
7.60-15	8	B	TL	378	193	50	360	950	5.50	6.00
9.5L-15	8	B	TL	241	767	50	300	1120	7.00	6.50
9.5L-15	12	B	TL	241	767	50	440	1450	7.00	6.50
27x9.50-15	8	B	TL	229	686	50	410	850	7.00	9.50
10.00-15	8	B	TL	274	853	50	280	1450	8.00	8.50
11L-15	8	B	TT	279	777	50	250	1150	8.00	6.50
11L-15	10	B	TT	279	777	50	300	1320	8.00	6.50
11L-15	12	B	TL	279	777	50	360	1450	8.00	6.50
12.5L-15	8	B	TT	318	823	50	300	1360	10.00	7.00
12.5L-15	10	B	TL	318	823	50	300	1550	10.00	7.00
12.5L-15	12	B	TL	318	823	50	360	1750	10.00	7.00

TIRE SPECIFICATION	LOAD INDEX	SPEED GRADE	TIRE TYPE	SECTION WIDTH (MM)	OUTER DIAMETER (MM)	MAXIMUM SPEED (KM/H)	INFLATION PRESSURE (KPA)	MAXIMUM LOAD (KG)	DESIGN RIM WIDTH	PATTERN DEPTH (MM)
6.00-16	6	B	TT	159	712	50	300	690	4.00	6.50
11L-16	8	B	TT	279	803	50	250	1215	8.00	6.50
12.5L-16	10	B	TT	318	848	50	300	1600	10.00	7.00
12.5L-16	12	B	TT	318	848	50	360	1800	10.00	7.00
14L-16.1	8	B	TL	356	940	50	220	1750	11.00	9.50
14L-16.1	12	B	TL	356	940	50	300	2120	11.00	9.50
16.5L-16.1	10	B	TL	419	1024	50	180	2360	14.00	12.00
16.5L-16.1	14	B	TL	419	1024	50	250	2900	14.00	12.00
9.5L-15FI	10	J	TL	241	767	100	520	1400	7.00	6.50
11L-15FI	12	J	TL	279	777	100	620	1550	8.00	6.50
12.5L-15FI	12	J	TL	318	823	100	620	2120	10.00	7.00
14L-16.1FI	8	J	TL	356	940	100	310	1950	11.00	9.50
16.5L-16.1FI	8	J	TL	419	1024	100	310	2500	14.00	12.00



I-3C



SUITABLE FOR DRIVING AND DRIVEN WHEELS OF AGRICULTURAL EQUIPMENT.

- Super traction pattern design

TIRE SPECIFICATION	LOAD INDEX	SPEED GRADE	TIRE TYPE	SECTION WIDTH (MM)	OUTER DIAMETER (MM)	MAXIMUM SPEED (KM/H)	INFLATION PRESSURE (KPA)	MAXIMUM LOAD (KG)	DESIGN RIM WIDTH	PATTERN DEPTH (MM)
400/60-15.5	14	A8	TL	404	874	40	360	*3250/**2000	AG13.00	20.00
400/60-15.5	16	A8	TL	404	874	40	400	*2900/**2240	AG13.00	20.00
400/55-22.5	20	A8	TL	404	1012	40	550	*4250/**3000	AG13.00	25.50
400/55-22.5	16	A8	TL	404	1012	40	320	*3075/**2180	AG13.00	25.50
500/60-22.5	16	A8	TL	503	1173	40	500	*6000/**4250	16.00DC	26.00
550/60-22.5	16	A8	TL	537	1254	40	300	*5300/**3750	16.00DC	25.00

TIRE SPECIFICATION	LOAD INDEX	SPEED GRADE	TIRE TYPE	SECTION WIDTH (MM)	OUTER DIAMETER (MM)	MAXIMUM SPEED (KM/H)	INFLATION PRESSURE (KPA)	MAXIMUM LOAD (KG)	DESIGN RIM WIDTH	PATTERN DEPTH (MM)
600/55-22.5	16	A8	TL	611	1232	40	280	*5600/**4000	20.00DC	26.00
600/50-22.5	16	A8	TL	611	1172	40	320	*5600/**4000	AG20.00	26.00
600/55-26.5	16	A8	TL	611	1333	40	240	*5300/**3750	AG20.00	26.00
700/50-22.5	12	A8	TL	700	1270	40	220	*5600/**4000	24.00DC	27.00
700/50-22.5	16	A8	TL	700	1270	40	280	*6700/**4750	24.00DC	27.00
500/45-22.5	16	A8	TL	503	1022	40	280	*3350/**2360	AG16.00	25.50
700/50-26.5	16	A8	TL	710	1333	40	240	*5800/**4125	AG24.00	26.00





F-2



SUITABLE FOR PLOWING AND SHORT-DISTANCE FIELD TRANSPORTATION.

- Tractor front wheel.
- Good guiding performance and anti-skid performance.

TIRE SPECIFICATION	LOAD INDEX	SPEED GRADE	TIRE TYPE	SECTION WIDTH (MM)	OUTER DIAMETER (MM)	MAXIMUM SPEED (KM/H)	INFLATION PRESSURE (KPA)	MAXIMUM LOAD (KG)	DESIGN RIM WIDTH	PATTERN DEPTH (MM)
4.00-12	4	A8	TT	112	539	40	360	225	3.00	12.00
5.00-12	4	A8	TT	130	570	40	360	275	3.00	12.00
5.00-15	4	A8	TT	130	664	40	300	325	3.00	13.00
5.00-15	6	A8	TT	130	664	40	410	400	3.00	13.00
7.5L-15	6	A8	TT	208	746	40	300	650	6.00	15.00
9.5L-15	8	A8	TT	241	782	40	330	850	7.00	24.00
11L-15	8	A8	TT	279	813	40	300	950	8.00	27.50
5.50-16	4	A8	TT	150	713	40	280	390	4.00	11.00
6.00-16	6	A8	TT	159	739	40	360	515	4.00	6.50
6.00-16	8	A8	TT	159	739	40	470	615	4.00	15.00
6.50-16	6	A8	TT	173	761	40	330	560	4.50	14.50
6.50-16	8	A6	TT	173	761	30	420	735	4.50	14.50
7.50-16	8	A8	TT	203	808	40	390	775	5.50	19.50
9.00-16	10	A8	TT	235	860	40	390	1120	6.00	22.00
10.00-16	8	A8	TT	274	894	40	300	1060	8.00	26.00
11.00-16	8	A8	TT	315	967	40	280	1180	10.00	24.00

TIRE SPECIFICATION	LOAD INDEX	SPEED GRADE	TIRE TYPE	SECTION WIDTH (MM)	OUTER DIAMETER (MM)	MAXIMUM SPEED (KM/H)	INFLATION PRESSURE (KPA)	MAXIMUM LOAD (KG)	DESIGN RIM WIDTH	PATTERN DEPTH (MM)
7.50-18	6	A8	TT	203	859	40	300	730	5.50	21.00
7.50-18	8	A8	TT	203	859	30	385	850	5.50	21.00
4.00-19	4	A8	TT	112	717	40	360	325	3.00	12.00
4.00-14	6	A6	TT	110	590	30	420	370	3.00	15.00
4.00-16	4	A6	TT	110	640	30	340	300	3.00	12.00
6.00-16	6	A6	TT	159	739	30	340	560	4.00	13.00
7.50-16	8	A6	TT	203	808	30	370	870	5.50	21.00
7.50-16	10	A6	TT	203	808	30	475	1030	5.50	21.00
6.50-20	6	A6	TT	180	860	30	310	725	5.00	18.00
6.50-20	8	A6	TT	180	860	30	420	865	5.00	18.00
7.50-20	8	A6	TT	203	909	30	370	1020	5.50	21.00
10.00-15	10	A6	TT/TL	258	780	30	320	1660	9.00*15.3	9.00



F-3



SUITABLE FOR PLOWING AND SHORT-DISTANCE FIELD TRANSPORTATION.

- Guide Wheel Use.
- Good guiding performance and anti-skid performance.

TIRE SPECIFICATION	LOAD INDEX	SPEED GRADE	TIRE TYPE	SECTION WIDTH (MM)	OUTER DIAMETER (MM)	MAXIMUM SPEED (KM/H)	INFLATION PRESSURE (KPA)	MAXIMUM LOAD (KG)	DESIGN RIM WIDTH	PATTERN DEPTH (MM)
11L-15	8	A8	TL	279	813	40	300	950	8.00	12.70
11L-15	10	A8	TL	279	813	40	360	1060	8.00	12.70
11L-15	12	A8	TL	279	813	40	440	1190	8.00	12.70
11L-15	14	A8	TL	279	813	40	500	1295	8.00	12.70
11L-16	10	A8	TL	279	838	40	360	1120	8.00	12.70
11L-16	12	A8	TL	279	838	40	440	1250	8.00	12.70
11L-16	14	A8	TL	279	838	40	500	1385	8.00	12.70

AGRICULTURAL MACHINERY TIRE SERIES

AR833



FOR AGRICULTURAL EQUIPMENT TRAILER TIRES

TIRE SPECIFICATION	LOAD INDEX	SPEED GRADE	TIRE TYPE	SECTION WIDTH (MM)	OUTER DIAMETER (MM)	MAXIMUM SPEED (KM/H)	INFLATION PRESSURE (KPA)	MAXIMUM LOAD (KG)	DESIGN RIM WIDTH	PATTERN DEPTH (MM)
710/50R26.5IMP	170D	181A8	TL	AG24.00	1383	6000/8250	400	26.00		
710/45R22.5IMP	165D	175A8	TL	AG24.00	1212	5150/6900	400	25.00		
600/55R26.5IMP	158D	168A8	TL	AG20.00	1333	4250/5600	320	26.00		
600/55R26.5IMP	165D	175A8	TL	AG20.00	1333	5150/6900	400	26.00		
600/55R26.5IMP	169D	180A8	TL	AG20.00	1333	5800/8000	500	26.00		
560/60R22.5IMP	155D	165A8	TL	AG16.00	1244	3875/5150	320	25.00		
560/60R22.5IMP	161D	172A8	TL	AG16.00	1244	4625/6300	400	25.00		
560/60R22.5IMP	165D	175A8	TL	AG16.00	1244	5150/6900	500	25.00		
560/45R22.5IMP	146D	157A8	TL	AG16.00	1076	3000/4128	320	24.00		
560/45R22.5IMP	152D	163A8	TL	AG16.00	1076	3550/4875	400	24.00		
650/55R26.5IMP	169D	180A8	TL	AG20.00	1389	5800/8000	400	26.00		
600/50R22.5IMP	156D	167A8	TL	AG20.00	1172	4000/5450	360	25.00		
600/50R22.5IMP	159D	170A8	TL	AG20.00	1172	4375/6000	400	25.00		
600/50R22.5IMP	163D	174A8	TL	AG20.00	1172	4875/6700	500	25.00		
750/60R30.5IMP	181D	192A8	TL	AG24.00	1675	8250/11200	400	26.00		



I-3



SUITABLE FOR DRIVING AND DRIVEN WHEELS OF AGRICULTURAL MACHINERY

- Super traction pattern design.
- Good traction performance.

TIRE SPECIFICATION	LOAD INDEX	SPEED GRADE	TIRE TYPE	SECTION WIDTH (MM)	OUTER DIAMETER (MM)	MAXIMUM SPEED (KM/H)	INFLATION PRESSURE (KPA)	MAXIMUM LOAD (KG)	DESIGN RIM WIDTH	PATTERN DEPTH (MM)
10.0/75-15.3	12	A6	TT/TL	285	880	30	430	1800	9.00	16.00

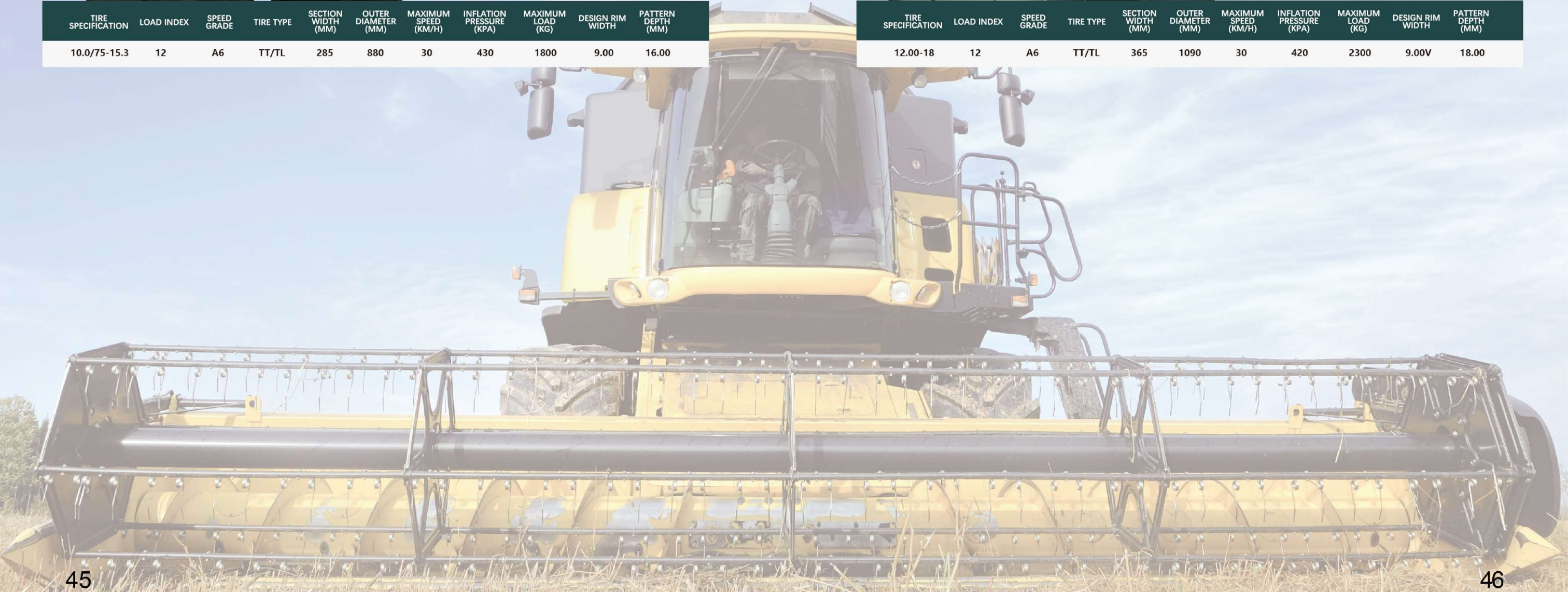
I-3B



SUITABLE FOR DRIVING AND DRIVEN WHEELS OF AGRICULTURAL MACHINERY

- Have good abrasion resistance
- Good self-cleaning properties
- Mainly used in corn fields, combine harvester use

TIRE SPECIFICATION	LOAD INDEX	SPEED GRADE	TIRE TYPE	SECTION WIDTH (MM)	OUTER DIAMETER (MM)	MAXIMUM SPEED (KM/H)	INFLATION PRESSURE (KPA)	MAXIMUM LOAD (KG)	DESIGN RIM WIDTH	PATTERN DEPTH (MM)
12.00-18	12	A6	TT/TL	365	1090	30	420	2300	9.00V	18.00





LS-2 FORESTRY TIRE PRODUCTS

LS-2 FORESTRY TIRE PRODUCTS

SUITABLE FOR FORESTRY OPERATIONS

- Unique tread block angle design provides excellent traction and self-cleaning tread pattern.
- Wire cushion design for excellent resistance to punctures.
- Specialized compound design for superior cut and wear resistance.

TIRE SPECIFICATION	LOAD INDEX	SPEED GRADE	TIRE TYPE	SECTION WIDTH (MM)	OUTER DIAMETER (MM)	MAXIMUM SPEED (KM/H)	INFLATION PRESSURE (KPA)	MAXIMUM LOAD (KG)	DESIGN RIM WIDTH	PATTERN DEPTH (MM)
600/55R26.5 LS	165 A8	TL	AG20.00	611	1333	5150		500	16.00	45.00





LS-2

TIRE SPECIFICATION	LOAD INDEX	SPEED GRADE	TIRE TYPE	SECTION WIDTH (MM)	OUTER DIAMETER (MM)	MAXIMUM SPEED (KM/H)	INFLATION PRESSURE (KPA)	MAXIMUM LOAD (KG)	DESIGN RIM WIDTH	PATTERN DEPTH (MM)
16.9-30	10	A6	TT/TL	429	1511	30	210	2575	15.00	48.00
18.4-26	10	A6	TT/TL	467	1476	30	170	2575	16.00	50.50
18.4-30	10	A6	TT/TL	467	1577	30	170	2725	16.00	50.50
18.4-34	10	A6	TT/TL	467	1679	30	170	2900	16.00	50.50
18.4-34	12	A6	TT/TL	467	1679	30	210	3250	16.00	50.50
23.1-26	14	A6	TT/TL	587	1632	30	210	4125	20.00	53.00
23.1-26	16	A6	TT/TL	587	1632	30	240	4500	20.00	53.00
24.5-32	16	A6	TT/TL	622	1831	30	210	5000	21.00	54.00
24.5-32	18	A6	TT/TL	622	1831	30	240	5450	21.00	54.00

TIRE SPECIFICATION	LOAD INDEX	SPEED GRADE	TIRE TYPE	SECTION WIDTH (MM)	OUTER DIAMETER (MM)	MAXIMUM SPEED (KM/H)	INFLATION PRESSURE (KPA)	MAXIMUM LOAD (KG)	DESIGN RIM WIDTH	PATTERN DEPTH (MM)
28L-26	14	A6	TT/TL	714	1644	30	170	4250	25.00	55.00
28L-26	16	A6	TT/TL	714	1644	30	210	4750	25.00	55.00
28L-26	20	A6	TT/TL	714	1644	30	240	5150	25.00	55.00
28L-26	26	A6	TT/TL	714	1644	30	340	6500	25.00	55.00
30.5L-32	16	A6	TT/TL	775	1847	30	170	5300	27.00	55.50
30.5L-32	20	A6	TT/TL	775	1847	30	210	6000	27.00	55.50
30.5L-32	26	A6	TT/TL	775	1847	30	280	7100	27.00	55.50
30.5L-32	32	A6	TT/TL	775	1847	30	340	8000	27.00	55.50



AGRICULTURAL ENGINEERING TIRE SERIES



IND

AGRICULTURAL ENGINEERING TIRES

**SUITABLE FOR INDUSTRIAL BUILDINGS
AND ROAD WORKS**

- Deep tread design provides excellent traction performance
- Unique bead design provides better air tightness for tubeless tires
- Wear-resistant tread compound design for longer service life

TIRE SPECIFICATION	LOAD INDEX	SPEED GRADE	TIRE TYPE	SECTION WIDTH (MM)	OUTER DIAMETER (MM)	MAXIMUM SPEED (KM/H)	INFLATION PRESSURE (KPA)	MAXIMUM LOAD (KG)	DESIGN RIM WIDTH	PATTERN DEPTH (MM)
440/80-24(16.9-24)IND	146	A8	TL	441	1314	40	240	3000	14.00	34.00
440/80-24(16.9-24)IND	154	A8	TL	441	1314	40	320	3750	14.00	34.00
440/80-24(16.9-24)IND	161	A8	TL	441	1314	40	400	4625	14.00	34.00
440/80-28(16.9-28)IND	148	A8	TL	441	1415	40	240	3150	14.00	34.00
440/80-28(16.9-28)IND	156	A8	TL	441	1415	40	320	4000	14.00	34.00
440/80-28(16.9-28)IND	163	A8	TL	441	1415	40	400	4875	14.00	34.00
480/80-26(18.4-26)IND	152	A8	TL	479	1428	40	240	3550	15.00	34.00
480/80-26(18.4-26)IND	156	A8	TL	479	1428	40	280	4000	15.00	34.00
480/80-26(18.4-26)IND	160	A8	TL	479	1428	40	320	4500	15.00	34.00

R-4 SERIES OF PRODUCTS

R-4A R-4B R-4D



R-4

TIRE SPECIFICATION	LOAD INDEX	SPEED GRADE	TIRE TYPE	SECTION WIDTH (MM)	OUTER DIAMETER (MM)	MAXIMUM SPEED (KM/H)	INFLATION PRESSURE (KPA)	MAXIMUM LOAD (KG)	DESIGN RIM WIDTH	PATTERN DEPTH (MM)
14.9-24	6	A8	TL	378	1241	40	165	1950	13.00	26.00
14.9-24	8	A8	TL	378	1241	40	210	2300	13.00	26.00
14.9-24	12	A8	TL	378	1241	40	290	2900	13.00	26.00
16.9-24	8	A8	TL	429	1309	40	190	2650	15.00	26.00
16.9-24	10	A8	TL	429	1309	40	220	2900	15.00	26.00
16.9-24	12	A8	TL	429	1309	40	260	3250	15.00	26.00
16.9-24	14	A8	TL	429	1309	40	290	3450	15.00	26.00
18.4-24	8	A8	TL	467	1375	40	170	2900	16.00	28.00
18.4-24	10	A8	TL	467	1375	40	210	3350	16.00	28.00
18.4-24	12	A8	TL	467	1375	40	250	3750	16.00	28.00
18.4-28	8	A8	TL	467	1477	40	170	3075	15.00	28.00
17.5L-24	8	A8	TL	445	1241	40	170	2430	15.00	26.50
17.5L-24	10	A8	TL	445	1241	40	220	2800	15.00	26.50
17.5L-24	12	A8	TL	445	1241	40	260	2995	15.00	26.50
17.5L-24	18	A8	TL	445	1241	40	400	3890	15.00	26.50
19.5L-24	12	A8	TL	495	1314	40	230	3450	17.00	29.50
19.5L-24	14	A8	TL	495	1314	40	260	3700	17.00	29.50
21L-24	12	A8	TL	533	1378	40	220	3875	18.00	29.50
21L-24	16	A8	TL	533	1378	40	280	4500	18.00	29.50



R-4E



SUITABLE FOR SMALL CONSTRUCTION MACHINERY FORKLIFTS, LOADERS AND TRUCKS WITH POOR ROAD CONDITIONS.

- Bigger tread blocks, smaller angle of tread blocks, deeper tread pattern than R-4 series bias ply tires.
- Traction and puncture and abrasion resistance are superior to the 2R-4 series bias-ply tires.

TIRE SPECIFICATION	LOAD INDEX	SPEED GRADE	TIRE TYPE	SECTION WIDTH (MM)	OUTER DIAMETER (MM)	MAXIMUM SPEED (KM/H)	INFLATION PRESSURE (KPA)	MAXIMUM LOAD (KG)	DESIGN RIM WIDTH	PATTERN DEPTH (MM)
400/70R20 (16.0/70R20)IND	149	B/A8	TL	404	1068	50/40	400	3250	13.00	30.00
400/70R24 (16.0/70R24)IND	152	B/A8	TL	404	1170	50/40	400	3550	13.00	30.50
400/70R24 (16.0/70R24)IND	158	B/A8	TL	404	1170	50/40	500	4250	13.00	30.50
17.5LR24 (460/70R24)IND	152	B/A8	TL	455	1254	50/40	320	3550	15.00	36.00
17.5LR24 (460/70R24)IND	159	B/A8	TL	455	1254	50/40	400	4375	15.00	36.00
500/70R24 (19.5LR24)IND	157	B/A8	TL	503	1310	50/40	300	4125	16.00	38.00
500/70R24 (19.5LR24)IND	164	B/A8	TL	503	1310	50/40	400	5000	16.00	38.00
540/70R24 (21LR24)IND	153	B/A8	TL	540	1366	50/40	240	3650	18.00	39.50
540/70R24 (21LR24)IND	161	B/A8	TL	540	1366	50/40	320	4625	18.00	39.50
540/70R24 (21LR24)IND	168	B/A8	TL	540	1366	50/40	400	5600	18.00	39.50

TIRE SPECIFICATION	LOAD INDEX	SPEED GRADE	TIRE TYPE	SECTION WIDTH (MM)	OUTER DIAMETER (MM)	MAXIMUM SPEED (KM/H)	INFLATION PRESSURE (KPA)	MAXIMUM LOAD (KG)	DESIGN RIM WIDTH	PATTERN DEPTH (MM)
280/80R18 (10.5/80R18)IND	132	B/A8	TL	282	905	50/40	400	2000	9.00	26.00
280/80R20 (10.5/80R20)IND	133	B/A8	TL	282	956	50/40	400	2060	9.00	26.00
340/80R18 (12.5/80R18)IND	143	B/A8	TL	343	1001	50/40	400	2725	11.00	28.00
340/80R20 (12.5/80R20)IND	138	B/A8	TL	343	1052	50/40	320	2360	11.00	28.00
340/80R20 (12.5/80R20)IND	144	B/A8	TL	343	1052	50/40	400	2800	11.00	28.00
400/80R24 (15.5/80R24)IND	156	B/A8	TL	404	1250	50/40	400	4000	13.00	35.00
400/80R24 (15.5/80R24)IND	162	B/A8	TL	404	1250	50/40	500	4750	13.00	35.00
440/80R24 (16.9R24)IND	154	B/A8	TL	441	1314	50/40	320	3750	14.00	37.00
440/80R24 (16.9R24)IND	161	B/A8	TL	441	1314	50/40	400	4625	14.00	37.00
440/80R24 (16.9R24)IND	168	B/A8	TL	441	1314	50/40	500	5600	14.00	37.00
440/80R28 (16.9R28)IND	156	B/A8	TL	441	1415	50/40	320	4000	14.00	37.00
440/80R28 (16.9R28)IND	163	B/A8	TL	441	1415	50/40	400	4875	14.00	37.00
480/80R26 (18.4R26)IND	160	B/A8	TL	479	1428	50/40	320	4500	15.00	38.00
480/80R26 (18.4R26)IND	167	B/A8	TL	479	1428	50/40	400	5450	15.00	38.00